



# Why you should stay with us

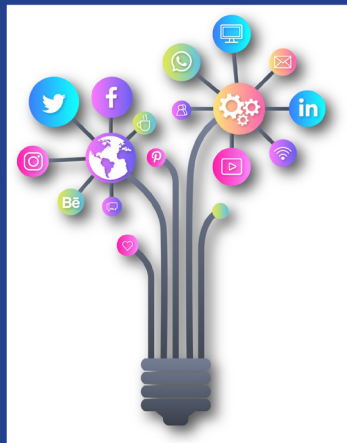
## 'East or west, home is the best'....

This can be said of your preferred PFA - US! You made a choice to stick with us till date and there are many more reasons why that should not change. Let us show you why:



**Our rich heritage and track record:** Stanbic IBTC Pension Managers is a member of the Stanbic IBTC Group, which has been around for over 3 decades! Owing to this track record, over 1.8 million people trust us with their pension. Surely 1.8 million clients cannot be wrong!

**Sustainable long-term returns and transparency:** With access to in-depth market research by our experts, our clients enjoy competitive risk adjusted returns.



**Multiple channels of engagement:** Our channels are easily accessible and tailored to suit your individual preferences, regardless of age. These channels include:

- Branch network nationwide
- 24/7 multi-lingual contact center
- Pension-on-wheels (we come to your doorstep)
- Mobile app
- Secure Website (MyPension Portal)
- Chatbot (available 24/7)
- Email – [pensionsolution@stanbicibtc.com](mailto:pensionsolution@stanbicibtc.com)
- Short code service (30388)
- Wide Social Media presence



**Reward System:** The Stanbic IBTC Pension Managers loyalty program gives clients access to discounts at selected stores!

With these benefits, where better to continue your retirement journey than with us?

Call us today on **01-2716000** or **email – [pensionsolution@stanbicibtc.com](mailto:pensionsolution@stanbicibtc.com)** to refer your family and friends.

## The Stanbic IBTC RSA Fund

In line with the investment guidelines issued by the National Pension Commission, the portfolio allocation for Fund I,II,III & IV were as follows as at 31 March 2022: Government Securities (30.58%, 64.60%, 66.56% & 59.10%), Money Market and Cash (49.23%, 19.88%, 26.01% & 33.43%), Quoted Equities (8.88%, 11.35%, 3.09% & 0.58%), Alternative Assets (Including mutual funds) (3.52%, 1.16%, 0.06% & 0.10%) and Other Fixed Income Instruments (7.79%, 3.01%, 4.28% & 6.79%).

**StanbicIBTC ITCANBE™**

Pension Managers  
A member of Standard Bank Group